

**LARGEST INDIAN PVC EDGE BAND MANUFACTURER**

**EDGEBAND**  
PROFILE - 2023  
Vol-II



**E3**  
elegant | everlasting | economical



# INDEX

| PARTICULARS                   | PAGE # |
|-------------------------------|--------|
| 1. ABOUT E3 GROUP             | 3      |
| 2. ABOUT E3 EDGE BAND TAPE    | 4      |
| 3. INFRASTRUCTURE             | 5      |
| 4. STANDARD OFFERINGS         | 6      |
| 5. TECHNICAL DETAILS          | 7      |
| 6. BESPOKE EDGE BAND SERVICES | 11     |
| 7. EDGE BAND SHADE CARD       | 12     |



# E3 GROUP

E3 group began as a little endeavour in the interior products industry in 1990 and quickly became India's top interior and exterior manufacturer with more than 5000 dealers network across PAN India. With ground-breaking qualities, E3 believes in 'Made in India' world-class quality products by 'Delivering promise and exceeding expectations.'

Aesthetically appealing interior design, combining functionality and expression, has become crucial for promoting elegance and perfection, an extension of the unique you. At E3 Group, delighting consumers sparks the imagination, curiosity arouses creativity, and innovations provide opportunities.

No matter your business size, you can trust E3 Group for direct sales, quality, consistency, and professionalism. E3 has something for everyone! Trusted for many years, E3 is known to walk the extra mile by providing bespoke interiors for every decor need.



E3 GROUP  
PROFILE

# PVC EDGE BAND



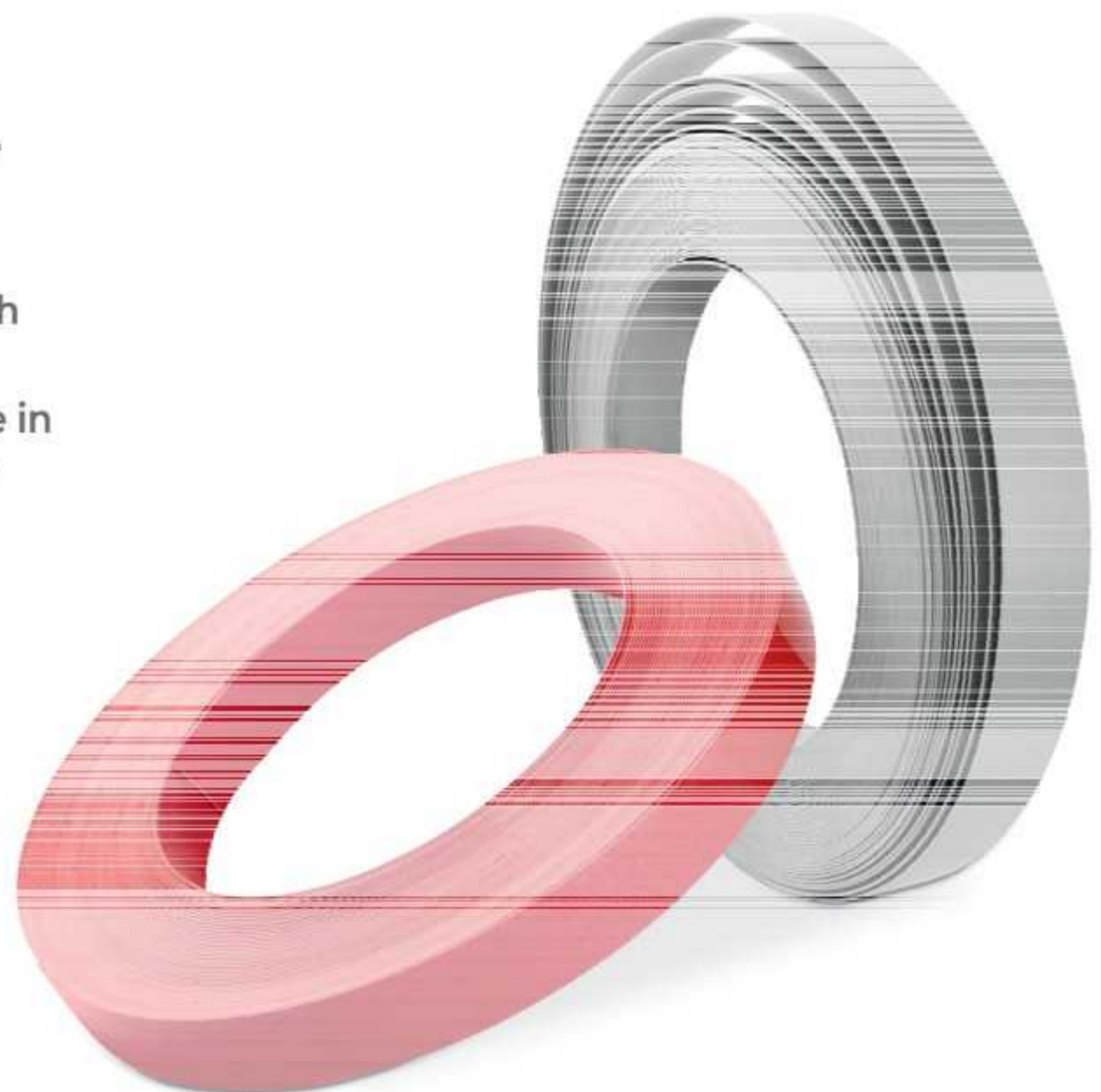
E3 Edgeband is an innovative technology created to create a seamless, coherent appearance in edge banding. High-quality panels require matching edge banding strips in colour, design, and finish to shine truly. In the market since 2013, E3 has been the leading supplier of Edgeband tapes in PAN India offering cutting-edge technology that can meet the qualitative criteria that the market demands.

We manufacture infinite tones, hues, and patterns to match the most diverse laminates and pre-laminated boards. E3 Edgeband is also renowned for having extraordinary qualities, including toughness, adaptability, flexibility, glossy appearance, protection, etc. Our modus operandi is, **'We can provide any colour and size on demand.'**

E3 Edge band firm's core technicians have more than 20 years of expertise, and the company has more than 10 years of solid technical foundation in product manufacturing and application. The technicians with the necessary training test each batch of PVC Edge Band. They retain flawless precision and accuracy by providing customers with the highest quality materials. E3 Edge Band comprises competent professionals and in-house designing experts to suit user preferences.

## FEATURES

- Easy to Install
- Cost effective
- UV Layer coating
- World class quality
- Termite Proof
- 100% recyclable
- Nail free
- Soft Edge
- Best Match
- Made in India





## PVC Edge Band Manufacturing Plant

We are one of the industry's most renowned manufacturers.

- Our manufacturing plant is the largest in India with an area of over 2 lakh sq. ft. situated in Noida, UP.
- At present, its production capacity is 6.5 lac metres per day.
- In stock Edge band tapes are available in more than 300 shades to match all laminates.
- We have dealers, distributors and warehouses in PAN India.
- Any Colors & Any size on demand.



E3 manufactures various types of edge banding as per customer requirements which can be classified as:

**MATERIAL :**

PVC & ABS

**SHADES :**

SOLID, WOODEN, METALLIC, FABRIC, MARBLE & STONES

**FINISHES:**

SUPER MATT, SUPER GLOSS, SPARKLE & SOFT TOUCHE

**ROLL LENGTH:**

From 25 to 300 metres.

**SIZES:**

Other than the standard sizes, any size can be made as per requirements

**STANDARD SIZES**

| WIDTH | THICKNESS | WIDTH | THICKNESS |
|-------|-----------|-------|-----------|
| 22mm  | 0.45mm    | 25mm  | 2.00mm    |
| 22mm  | 0.80mm    | 30mm  | 0.80mm    |
| 22mm  | 1.00mm    | 30mm  | 2.00mm    |
| 23mm  | 1.30mm    | 45mm  | 0.80mm    |
| 22mm  | 2.00mm    | 45mm  | 2.00mm    |
| 25mm  | 0.80mm    | 55mm  | 2.00mm    |



### Chemical Product

Product Name: Rigid PVC Edgebanding

Product Usage: A continuous extruded roll available in various thicknesses used to finish the raw edge of HPL, flake boards, plywood and medium density fiberboard. Available in various colors that matches with most of the laminated panels

### Composition / Information on Regulated Ingredients

Hazardous Ingredients:

This product contains no Hazardous Ingredients that can be released under normal temperature or working conditions. Rigid PVC Edgebanding contains no vinyl chloride monomers.

### Properties

| Description                          | Unit | Value      | Standard        |
|--------------------------------------|------|------------|-----------------|
| Hardness Shore                       | -    | D - 78 ± 4 | ISO868          |
| Shrinkage [1h at 140°F (60°C)]       | %    | < 0.5      | Works standard  |
| Static charging                      | -    | Low        | -               |
| Vicat softening Temperature (At 50N) | °C   | 80.3       | ASTM D1525-2009 |

### Resistance to Immersion Test (In boiling water for 2 hour)

|                         |        |     |              |
|-------------------------|--------|-----|--------------|
| (a) Change in thickness | %      | 4.2 | 1S:2046-1995 |
| (b) Change in mass      | %      | 3.9 | 1S:2046-1995 |
| (c) Appearance          | Degree | 5   | 1S:2046-1995 |

### Colour Fastness to Rubbing

|                     |        |     |             |
|---------------------|--------|-----|-------------|
| (a) At Dry Staining | Rating | 4/5 | IS:766-1988 |
| (b) At Wet Staining | Rating | 4/5 | IS:766-1988 |

### Colour Fastness to Light

|                   |         |                               |                |
|-------------------|---------|-------------------------------|----------------|
| (a) Type of lamp  | UV A340 | No cracks or blister observed | ASTM G154-2016 |
| (b) Exposure Time | 24 hour | No cracks or blister observed | ASTM G154-2016 |

### Resistance to Cigarette Burn

|            |        |   |              |
|------------|--------|---|--------------|
| Appearance | Rating | 4 | 1S:2046-1995 |
|------------|--------|---|--------------|

### Resistance to Staining (At R.T. for 24 hour)

| Description   | Unit   | Value | Standard     |
|---------------|--------|-------|--------------|
| (a) Acetone   | Rating | 5     | 1S:2046-1995 |
| (b) Black Tea | Rating | 5     | 1S:2046-1995 |

### Flammability Test

Condition of test piece (At 23°C and 50% R.H. for 48hour) Two sets of 3 test Specimens

|                          |    |     |                |
|--------------------------|----|-----|----------------|
| Cease to burn before     | mm | 25  | mark           |
| Cease to burn before the | mm | 100 | reference mark |

### Physical Data

|                  |              |
|------------------|--------------|
| State            | Solid        |
| Boiling Point    | NA           |
| Specific Gravity | 1.20 to 1.40 |
| Solubility       | Insoluble    |
| Volatility       | Negligible   |

### Processing Characteristics

| Machining                                 | PVC Suitability  |
|---|--|
| Cutting                                   | Good   |
| Milling Direction                         | counter direction  |
| Pre-milling                               | Good   |
| Radius Milling                            | Good   |
| Profiling                                 | Good   |
| Scraper Processing                        | Good   |
| Buffing                                   | Good   |
| Bonding                                   | Any conventional hot-melt adhesive suitable for edging tapes can be used |
| Polish Ability                            | Good   |
| Stress Whitening                          | Low  |
| Machining Center Processing Compatibility | Very Good  |



### PVC Edgebanding Specifications

1. **Color:** Slight color variations are possible from dye lot to dye lot.
2. **Finishes:** Available in Gloss, Matt & SF.  
Finish must be smooth and free of defects at a distance of 3 feet from the observer.  
Material either has UV inhibitors directly in the resin or has a UV topcoat.
3. **Interior Use:** Only for interior use and not to be exposed to temperatures above 150°F.
4. **Primer:** Backside is 100% covered with a visible primer for proper bond.
5. **Maintenance:** Clean surface with warm soapy water and wipe clean.

### Tolerances

#### Edge Banding Width

| Width mm | Tolerance mm |
|----------|--------------|
| 12 – 54  | ± 0.45       |

#### Edge Banding Thickness

| Width mm  | Tolerance mm |
|-----------|--------------|
| 0.4 - 0.7 | ± 0.05       |
| 0.8 - 1.5 | ± 0.10       |
| 1.6 - 2.0 | + 0.20       |
| 2.1 - 3.0 | + 0.25       |

### Storage

PVC Edge Banding tape is resistant to rot and may therefore be stored at room temperature (64°F to 68°F) in a room that is weatherproof and protected from direct sun light for a virtually unlimited period.

### Warranty

Using accepted industry standards, colors, woodgrains, and patterns have been individually matched and cross-referenced for the best suitable match. Color variation beyond the manufacturers' control may occur in individual resin batches. The manufacturers' warranty and liability for the bond, color match, and surface finish; extend only to the replacement value of the specific edgebanding material. It is the customer's sole responsibility to determine that the bond and color match are acceptable for production before use.

### Fire and Explosion Data

Flash Point: 390 - 700 Degrees Celsius

Flammable Limits

Upper Explosion Limit: N/A

Lower Explosion Limit: N/A

Auto Ignition Temperature: N/A

Suitable Extinguishing Media: Carbon Dioxide Blanket, Water Spray, Dry Powder, Foam

Special Fire Fighting Procedures: Full-face self-contained breathing apparatus (SCBA) used in positive pressure mode should be worn to prevent inhalation of airborne contaminants.

Unusual Fire/Explosion Hazards: May emit Hydrogen Chloride (HCL) or Carbon Monoxide (CO), Oxides of Nitrogen (NOx), other hazardous materials, and smoke are all possible.

### Reactive Data

Product Stability: Very Stable

Reactivity conditions: Under normal usage none. However, harsh chemicals such as Ketones, Toluenes, Acetones and other similar solvents may melt or react with the surface finish.

Hazardous Decomposition Implications: Hydrochloric acid can be formed if product is heated to the point of burning and then in the presence of water may form Hydrochloric Acid.

### First Aid

Inhalation: Remove the affected user to a well-ventilated area.

Eye Contact: Irritant only on contact, bathe area affected.

Ingestion: Under normal condition, there is no probable route of ingestion.

Skin Contact: Non-Toxic

### Disposal and Storage

Waste Disposal: Landfill

Recycle: Product can be reprocessed for re-use.

Environmental Toxicity: Adverse ecological impact is not known or expected under normal use.

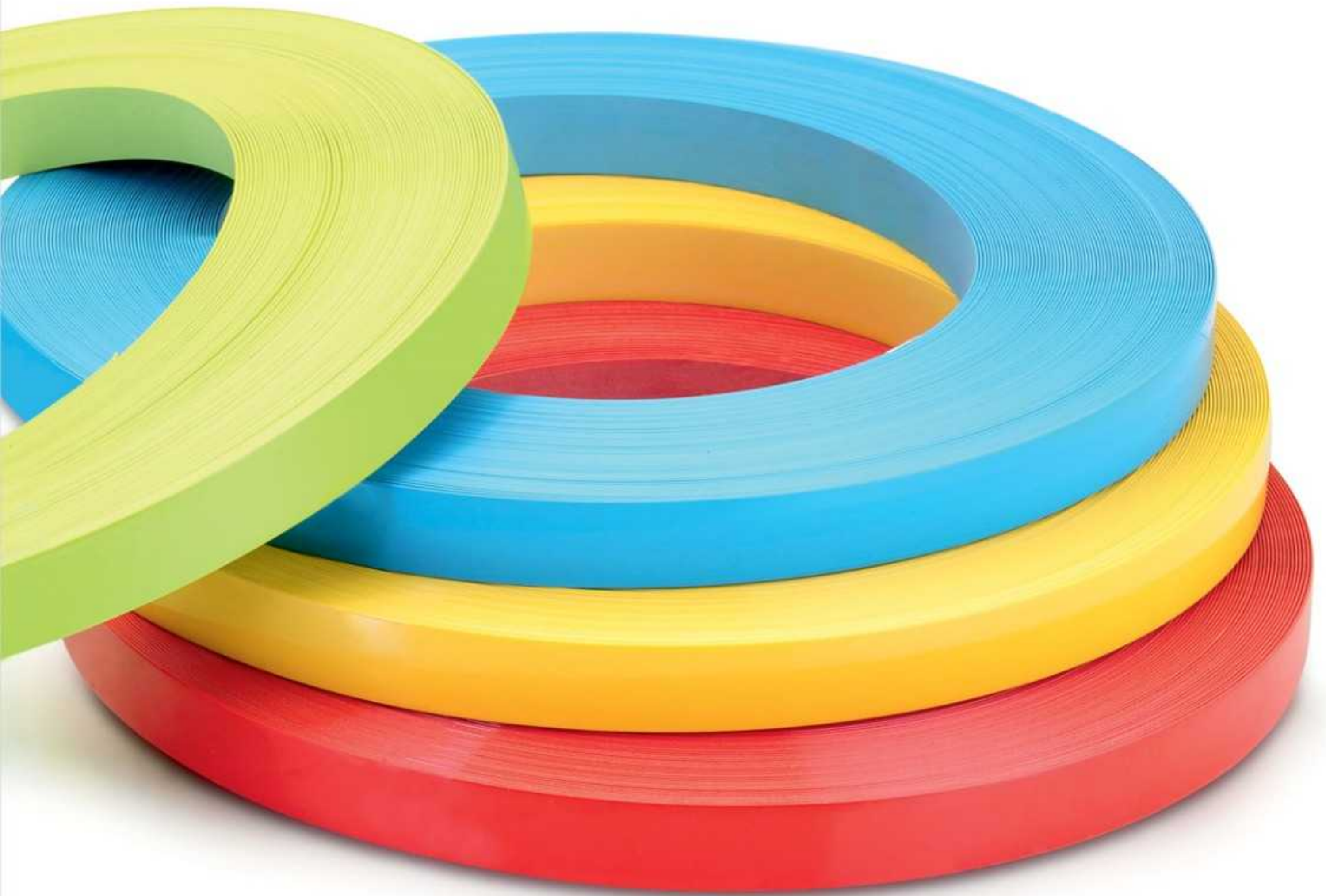
**CUSTOM-MADE EDGE BAND SAMPLES**





# E3

elegant | everlasting | economical



# EDGEBAND 2023 SHADE CARD

VOL-I



# WOODEN SERIES

MATT & GLOSS



# COLOUR CHART

## WOODEN SHADES



WENGE 1

2001



INTAL BEECH

2009



WENGE 2

2002



WHITE ASH

2010



WENGE 3

2003



DOUGLAS PINE

2011



NATURAL TEAK

2004



CLASSIC WALNUT

2012



HIGHLAND PINE

2005



LORRAINE WALNUT

2013



ACACIA DARK

2006



OXFORD CHERRY

2014



ACACIA LIGHT

2007



ALBERTA MAPLE

2015



BEVARIAN BEECH

2008



THANSAU MAPLE

2016

# COLOUR CHART

## WOODEN SHADES



SAPELLI

2017



HAZEL

2025



NATURAL MAPLE

2018



KHAYA MAHAGONY

2026



FERRA OAK

2019



ROSE MAHAGONY

2027



GOLDEN OAK

2020



FABRIC-1

2028



ANTIQUÉ OAK

2021



FABRIC-2

2029



DARK EBONY

2022



FABRIC-3

2030



AGRO WOOD

2023



FABRIC-4

2031



WENGE-4

2024



FABRIC-5

2032

# COLOUR CHART

## WOODEN SHADES



FABRIC-6

2033



URBAN OAK

2043



FABRIC-7

2034



WEATHERED OAK

2044



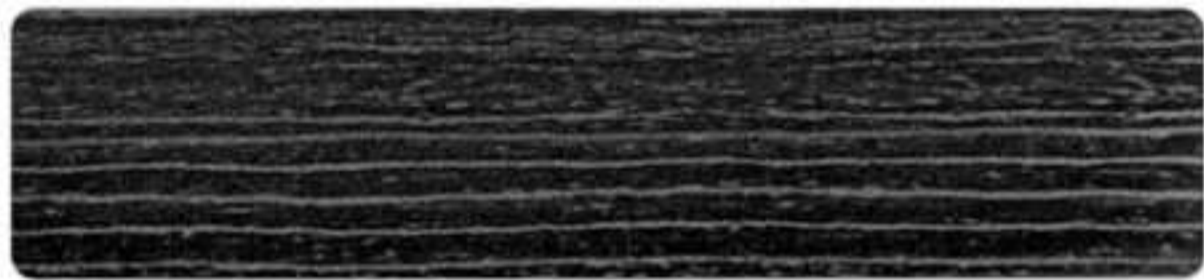
FABRIC-8

2035



WINE

2045



COUNTRY DARK

2036



ROUGH CUT-1

2046



COUNTRY LIGHT

2037



ROUGH CUT-2

2047



WHITE TEAK

2039



ROUGH CUT-3

2048



COMMON TEAK

2041



LIGHT SIAM TEAK

2049



BROWN OAK

2042



RAW ALUMINIUM

2050



# COLOUR CHART

## WOODEN SHADES



ALUMINIUM PEARL

2052



FABRIC-10

2060



NEO HIGHLAND PINE

2053



WENGE-6

2063



CHERRY CAPPUCINO

2054



SAND CROSS

2064



GHANA WENGE

2055



CHOCO CROSS

2065



CHESTNUT

2056



OCEAN RECON

2066



WENGE-5

2057



SANDY RECON

2067



SAPELLI-2

2058



FIBRE TEAK

2068



FABRIC-9

2059



FIBRE GOLD

2069

# COLOUR CHART

## WOODEN SHADES

NEW



CASTLE OAK

2070

NEW



CHOCO OAK

2071



FABRIC-11

2072



FABRIC-12

2073



FABRIC-13

2074



FABRIC-14

2075



FABRIC-15

2076



FABRIC-16

2077



FABRIC-17

2078



FABRIC-18

2079



CLASSIC P. WALNUT

2080



TIGRESS TEAK

2081



FABRIC-19

2082



FABRIC-20

2083



FABRIC-21

2084



FABRIC-22

2085

# COLOUR CHART

## WOODEN SHADES



GREY TEAK

2086



PALASANTO TEAK

2093



FABRIC-23

2087



NEW

SAMARA OAK

2094



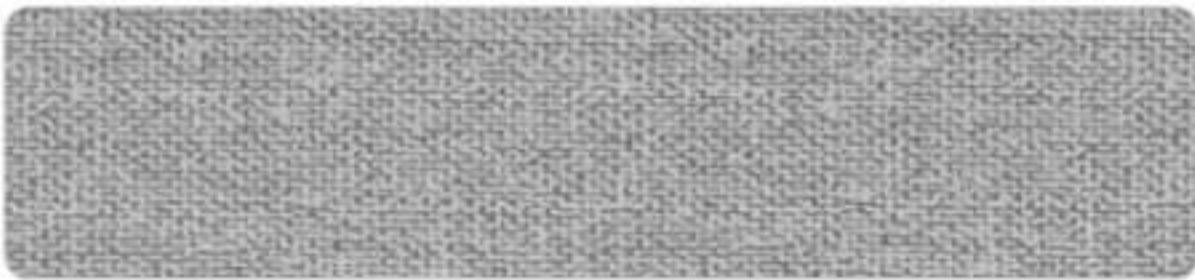
FABRIC-24

2088



FABRIC-27

2097



FABRIC-25

2089



FABRIC-28

2098



OAK-1

2090



FABRIC-29

2099



FABRIC-26

2096



FABRIC-30

2100



OAK-2

2091



LINER

2301



OAK-3

2092

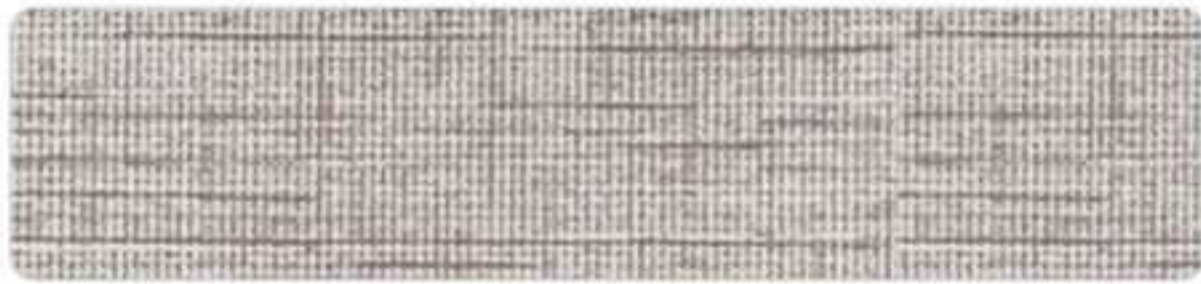


LINER

2302

# COLOUR CHART

## WOODEN SHADES



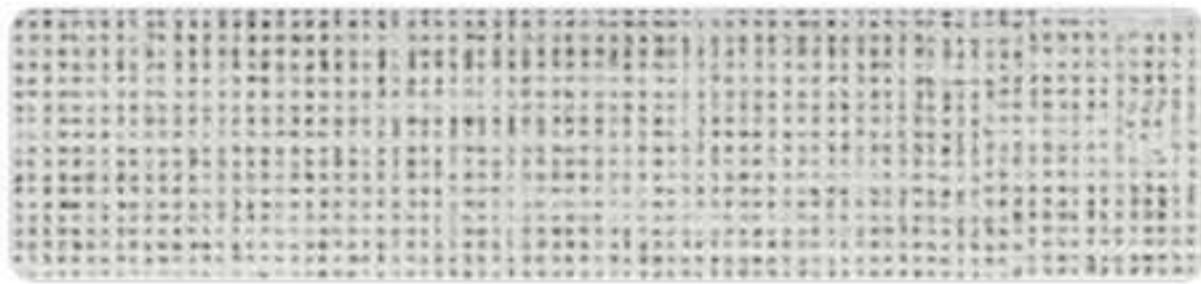
LINER

2303



LINER

2316



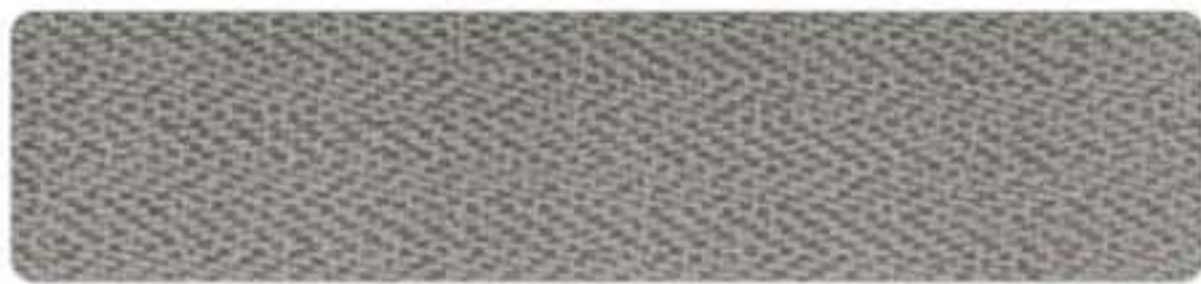
LINER

2308



LINER

2317



LINER

2309



LINER

2320



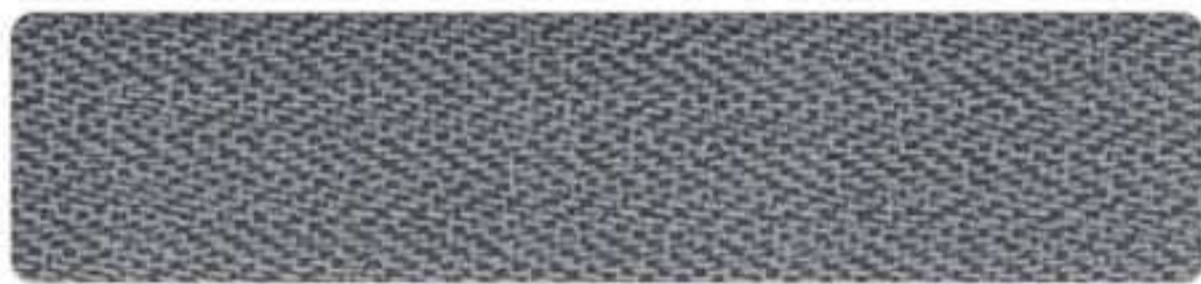
LINER

2310



LINER

2321



LINER

2311



LINER

2322



LINER

2312



LINER

2330



LINER

2313



LINER

2339



LINER

2315



LINER

2340

# COLOUR CHART

## WOODEN SHADES



LINER

2341

NEW



SAGRADA MARBLE

2523

NEW



SIERRA MARBLE

2525

NEW



WHITE MARBLE

2522

NEW



GOTHIC MARBLE

2524

NEW



BLACK MARBLE

2526

FOR  
**MATCHING**  
**EDGE BANDS**





# SOLID SERIES

MATT & GLOSS

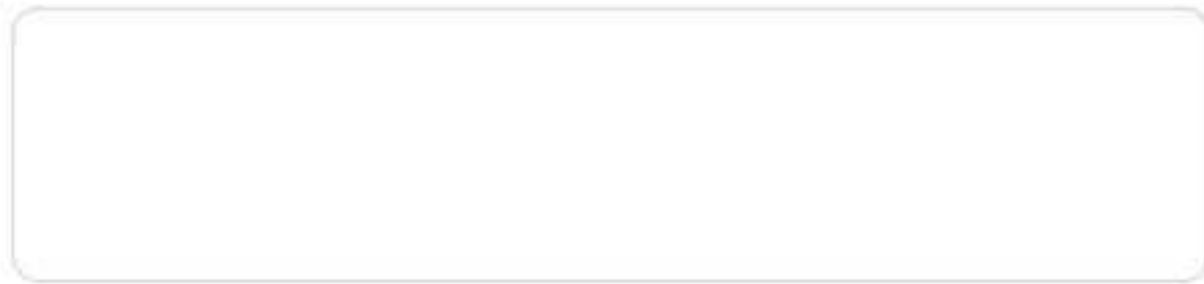
# COLOUR CHART

## SOLID SHADES



M-WHITE

1000



SUPER WHITE

1001



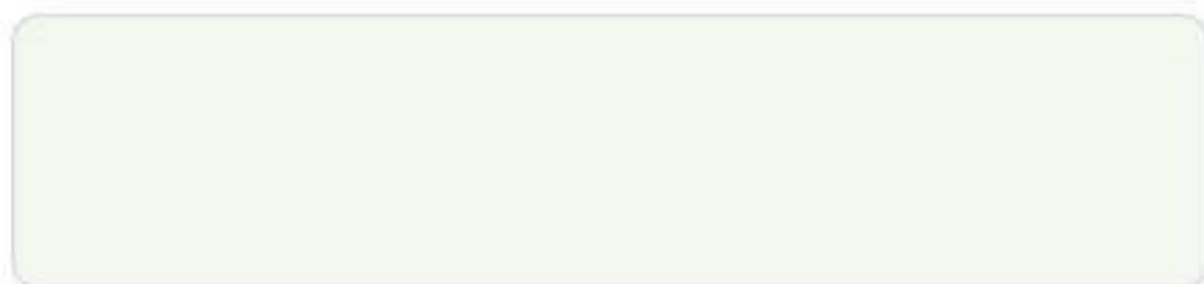
WHITE LILY

1101



FROSTY WHITE

1002



L. WHITE

1102



IVORY

1003



SOLAR WHITE

1103



SILVER GREY

1004



SLATE GREY

1005



BLACK

1006



ACTION YELLOW

1007



MARIGOLD YELLOW

1008



RED

1009



SHANGRILA

1010



ELECTRIC BLUE

1011



BLACK CURRENT

1012

# COLOUR CHART

## SOLID SHADES



CAPPUCINO

1013



NEW CAPPUCINO

1113



BUBBLE GUM

1014



ORANGE

1015



CHAMPAGNE

1020



TAN

1021



AUTUMN LEAF

1022



BERRY BRUNCH

1023

NEW



TURQUOISE

1016



DARK BROWN

1017



P. GREEN

1018



GOthic GREY

1019



FIESTA ROSE

1024



RED POPPY

1025



GRASS GREEN

1026



LIME

1027



# COLOUR CHART

## SOLID SHADES

NEW



MINT GREEN

1028



WINTER SEA

1036



KHAKHI

1029



SHORE

1037



AQUA BLUE

1030



ENIGMA

1038



LAVENDER

1031



CARBIE

1039



LILAC

1032



TROOPER

1040



RAW CREAM

1033



MORNING GLOW

1041



PINK POPPY

1034



CHOCOLATE

1042



DARK CITRUS

1035



MAGENTA

1043

# COLOUR CHART

## SOLID SHADES



PEARL BLACK 1044



PARAKEET 1048



SKY BLUE 1045



MISTY GREY 1049



IRISH CREAM 1046



DARK GREY 1050



ISLAND SKY 1047



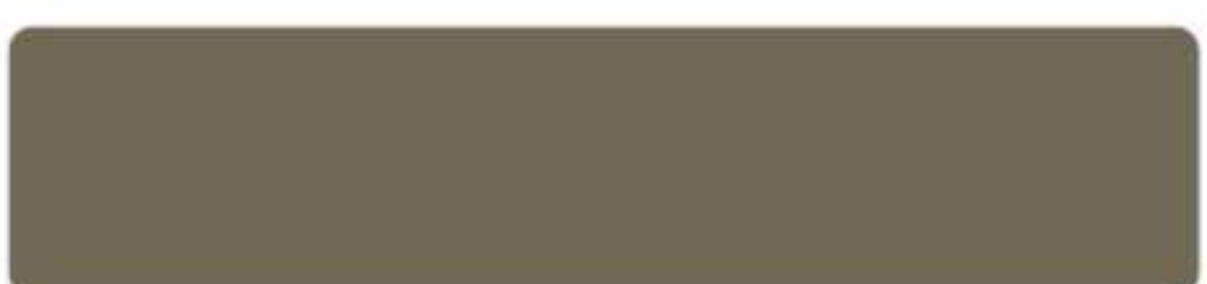
DARK SILVER GREY 1051



WARM GREY 1052



NEW PRAIRIE GREEN 1057



MOCHA BROWN 1053



NEW FOREST GREEN 1059



NEW SILKY CREAM 1054



NEW MIDNIGHT BLUE 1058



NEW FEATHER GREY 1055



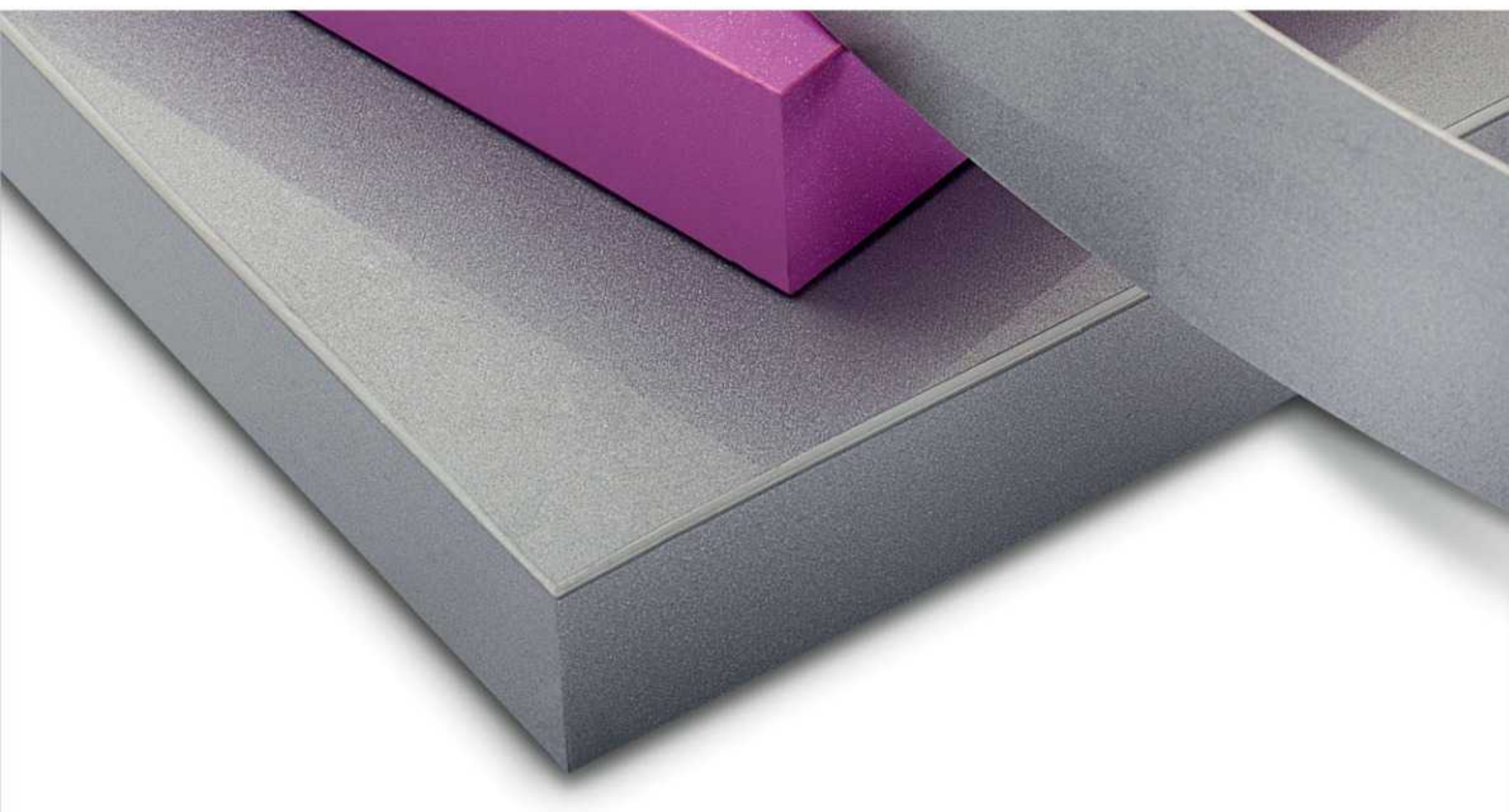
NEW PINK SALT 1060



NEW DREAM GREEN 1061



# SPARKLES & METALLIC



# COLOUR CHART

## SPARKLES & METALLIC



3001



3002

NEW



3004



3005

NEW



3006



3101



3102



3105



3106



3109



3110



3112



3125



3201

FOR  
MATCHING  
EDGE BANDS





FOR  
**MATCHING  
EDGE BANDS**



Customer Care for Edge Bands

 **+91 70251 70251**

info@e3panels.com | www.e3panels.com

